

Tuesday, 13th June 2023

Breakthrough results identify 'Mother Lode' copper target at the Storm Copper Project, Canada

- High-resolution ground gravity survey completed by American West Metals at Storm identifies significant new anomalies that support the potential for a large-scale sediment-hosted copper system as predicted by geological modeling
- Strong gravity anomalies identified below and adjacent to the known near-surface copper mineralisation extend for several kilometres and are interpreted to represent dense bodies that are consistent with copper sulphide deposits
- The outer periphery of a large gravity anomaly was intersected by a 2022 drill hole that terminated in 68m of copper-bearing sulphide mineralisation (remaining open at depth) from 277m downhole
- Gravity anomalies are coincident with historical electromagnetic (EM) and induced-polarisation (IP) anomalies indicating both dense and electrically chargeable bodies which are interpreted to be consistent with copper sulphides

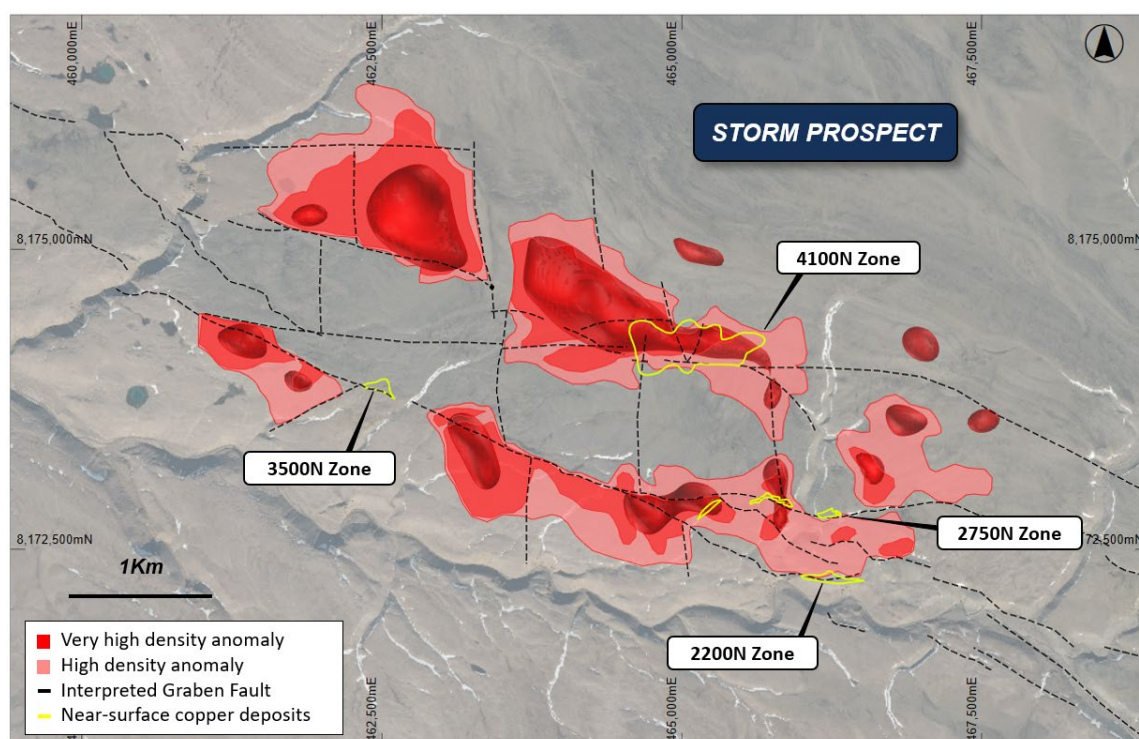


Figure 1: Gravity data interpretation map showing the 3D gravity targets, known copper sulphide deposits and major faults (overlying topography).



American West Metals Limited (**American West or the Company**) (ASX: AW1), is pleased to announce the results of a high-resolution ground gravity survey that was completed over the Storm Copper Project (**Storm or the Project**) on Somerset Island, Nunavut.

Dave O'Neill, Managing Director of American West Metals commented:

"The recent gravity survey over the Storm project area has produced spectacular results. The data supports our geological assumptions and the potential for a large copper system below the near-surface copper mineralisation.

"The high-resolution survey has successfully defined a series of large, dense bodies that sit directly under the high-grade 4100N Zone, and in key areas around the other known high-grade copper deposits.

"Importantly, our interpretation of the gravity data is supported by coincident historical geophysical anomalies and the 2022 discovery of copper sulphides in drill hole ST22-10, which is located on the edge of one of the newly identified gravity targets.

"The gravity anomalies are modelled to commence around 200m below surface and have a strike of several kilometres. We are chasing big copper targets here.

"The resource drill-out of the near-surface copper is progressing very well and we are confident of delivering a significant and robust maiden copper resource at Storm from those results alone.

"The new copper targets at depth are a game-changer for the potential copper endowment at Storm and we are excited to prioritise drilling of these exciting targets for the 2023 field program."



Figure 2: Chalcocite (with some malachite alteration in this photo) is extensively exposed at surface at Storm and suggests potential 'leakage' sourced from a large sediment-hosted copper system below.



LARGE AND DENSE BODIES DEFINED UNDER KNOWN COPPER MINERALISATION

The gravity survey is interpreted to have effectively defined a series of dense features that are spatially associated with the interpreted graben fault architecture and known copper sulphide mineralisation at Storm (Figure 3 & 4). These geological features closely adhere to the typical sediment-hosted copper model as seen in the large copper deposits of central and southern Africa and highlight the exceptional exploration potential of the area.

The interpretation has highlighted a series of NW-SE orientated gravity anomalies along the main Storm graben axis, which are discontinuous and or/offset in places due to a series of N-S oriented faults. The anomalies appear to have higher densities where they intersect the main graben faults, and form a series of lobes with decreasing density away from the faults (Figures 1 & 4).

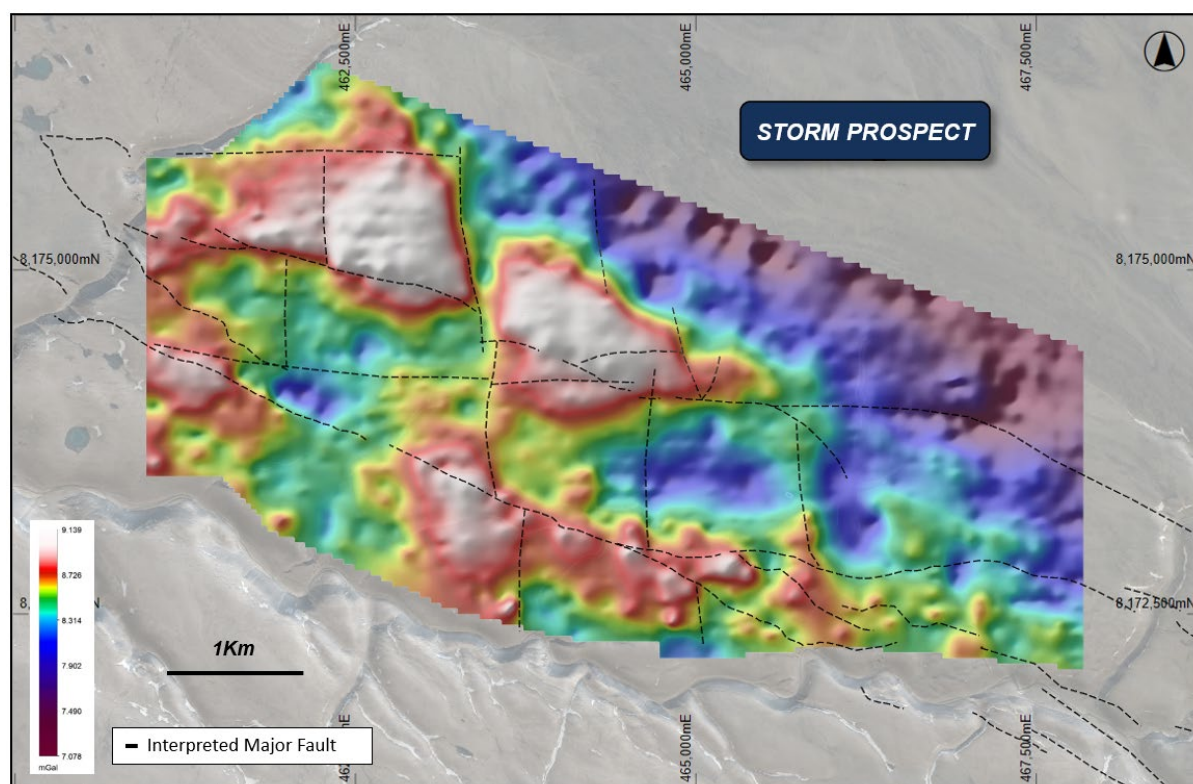


Figure 3: Total bouguer gravity anomaly image and graben fault architecture, overlaying topography.

The 'northern fault' gravity anomaly extends over approximately 4.8km, is located to the north of the main fault, and is broken into two main zones. The easternmost zone is located directly below the 4100N Zone, where ongoing drilling has defined thick and continuous copper mineralisation in the near surface over 1km of strike.

The 'southern fault' gravity anomaly is approximately 4km long, lies south of the graben fault, and is bounded by the 3500N, 2750N and 2200N high-grade copper zones.



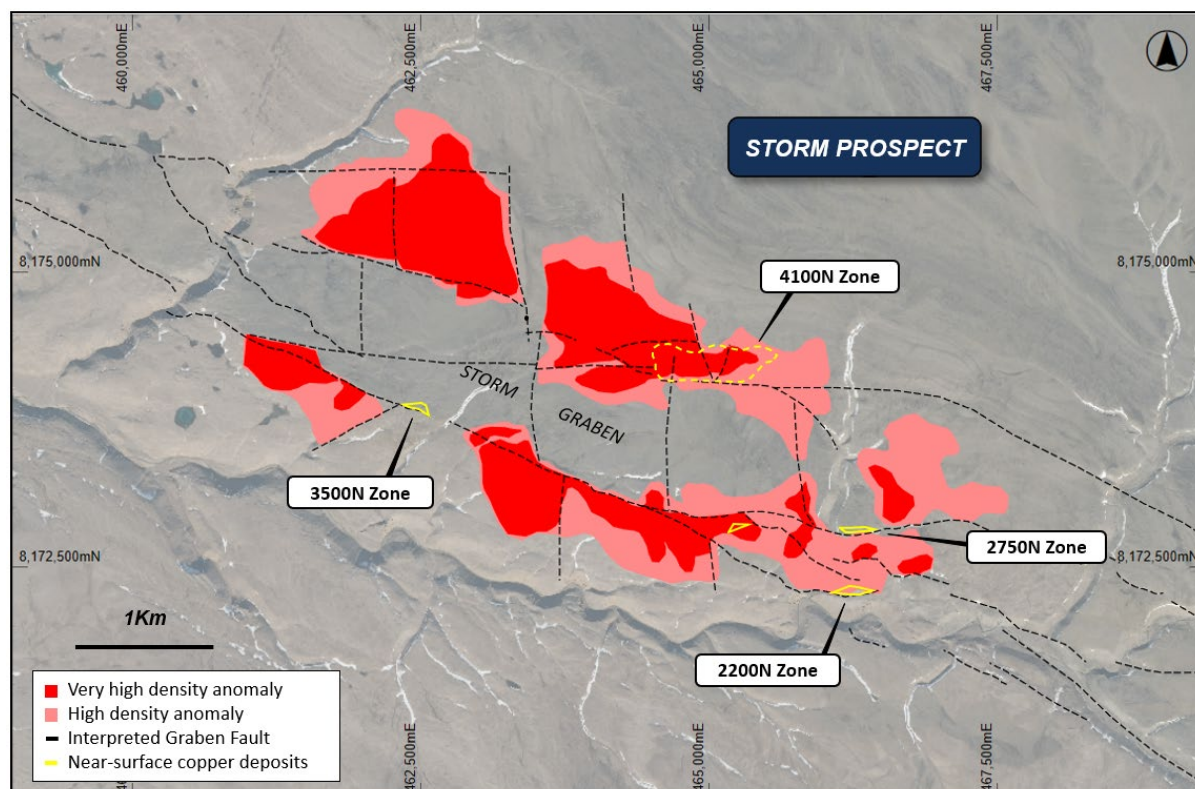


Figure 4: Interpretation of the bouguer gravity data showing the anomalies spatial relationship to the graben faults and known near surface copper deposits (overlaying topography).

'MOTHER LODGE' TARGETS MODELLED BY 3D INVERSION

A 3D inversion was completed on the gravity data to produce a series of gravity contrast iso-shells, which are designed to highlight the areas with the greatest density contrasts in 3D (Figures 5 & 6). These could represent potential areas of stronger copper mineralisation and are high priority drill targets.

The largest of the 3D gravity targets is located along the northern fault and directly underneath the 4100N Zone (Figures 5 & 6). The feature commences at approximately 200m depth and is approximately 2.3km long. The gravity feature is intersected by a strong historical IP anomaly on its upper contact. This is a highly significant association and indicates **a both dense and electrically chargeable body**. The only known dense and chargeable geological feature at depth in the Storm area are sulphides.

A number of gravity targets are also defined by the 3D inversion along the southern fault. The data indicates that a strong gravity target approaches the surface to the west of the high-grade 2750N Copper Zone. This location also features strong EM and IP anomalism associated with known copper mineralisation in sparse, shallow historic drilling (5m @ 2% Cu and 0.8m @ 20% Cu in drill hole ST00-66).



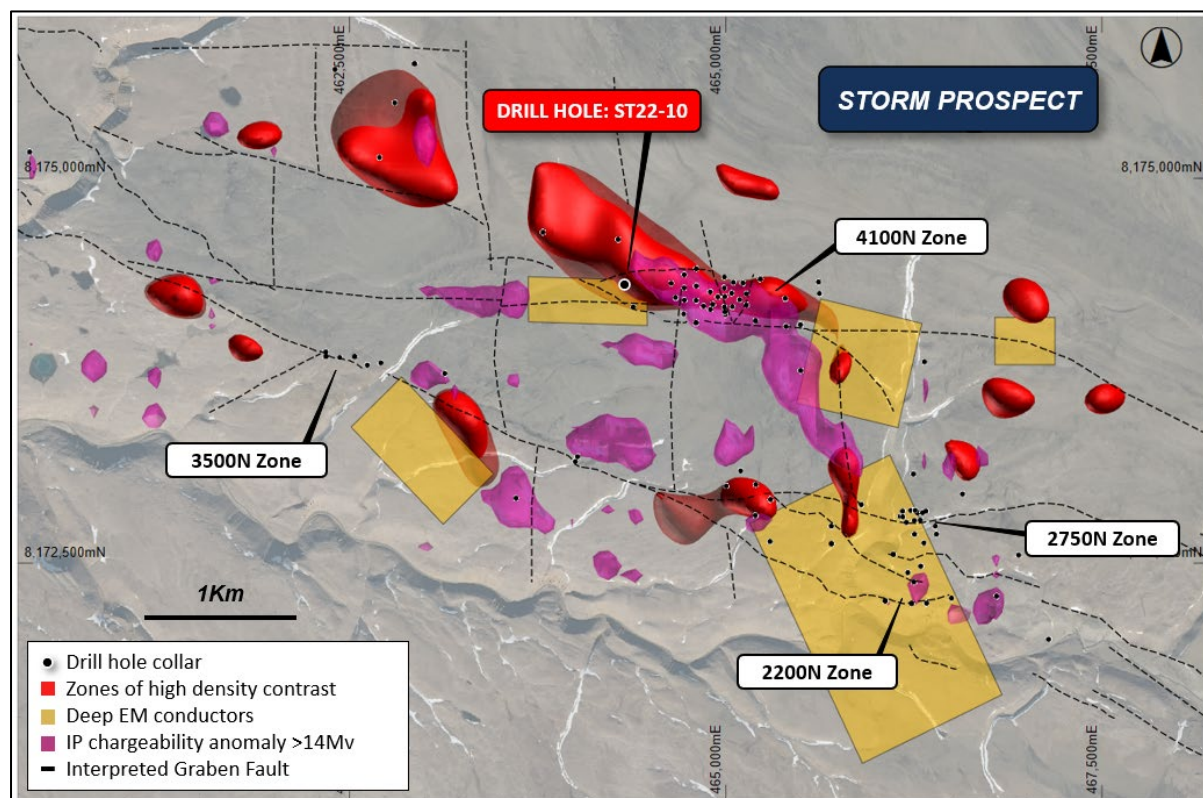


Figure 5: Geophysical summary map showing the new gravity density contrast anomalies, deep EM conductors and strong IP (>14Mv) anomalies (overlying drilling, graben faults and topography).

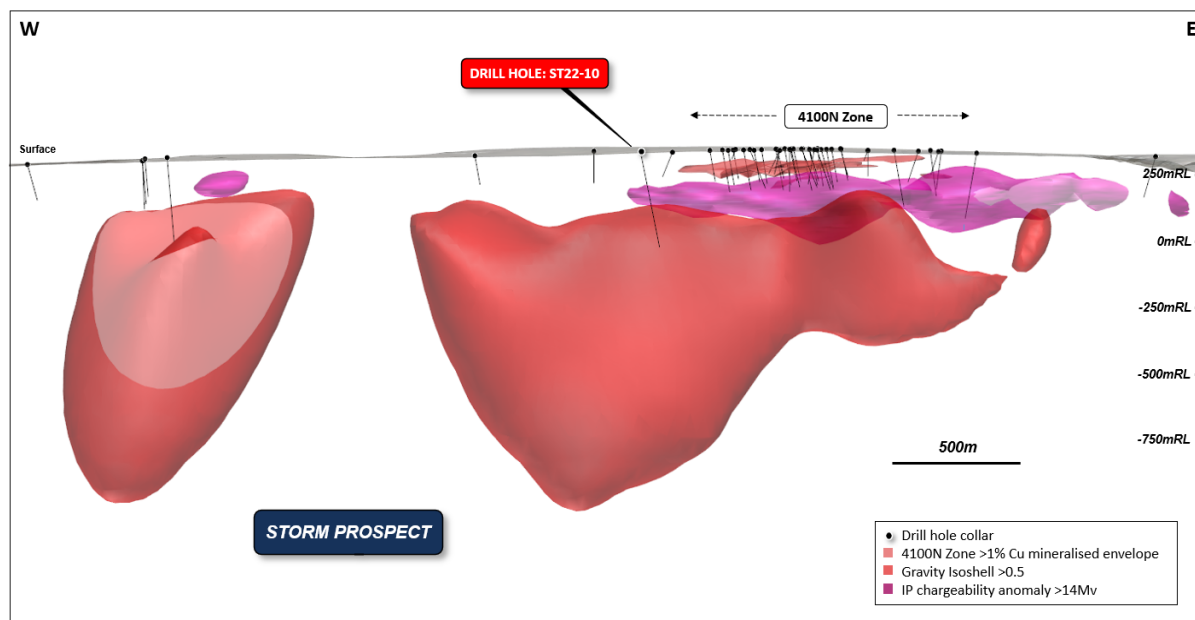


Figure 6: East-West long section showing the large density anomaly (red) underneath the 4100N Zone mineralisation. Note the strong IP anomaly (magenta) that intersects the top of the gravity anomaly.



DRILL HOLE ST22-10 –THE EDGE OF A MAJOR COPPER SYSTEM?

Exploration drill hole ST22-10 was completed during 2022 targeting a large EM anomaly to the west of, and at a deeper stratigraphic level than, the near surface high-grade 4100N Zone. The EM anomaly is located on the southern edge of a strong airborne gravity anomaly associated with the northern graben fault.

The drill hole intersected a thick sequence of copper and zinc sulphide-bearing mineralisation hosted within carbonate sediments before being abandoned due to technical drilling issues. Approximately 68.8m of chalcopyrite-bearing sulphide mineralisation (Figure 7) was intersected from 277m downhole (approx. 230m vertical depth), remaining open at depth. The sulphide mineralisation is interpreted to be stratabound and is hosted within a vuggy, bituminous and fossiliferous unit.



Figure 7: Chalcopyrite (copper sulphide), pyrite (iron sulphide), sphalerite (zinc sulphide) and galena (lead sulphide) within vuggy bituminous dolostone in ST22-10 drill core from 313m downhole.

A distinct zonation of metal associations and mineralogy is noted at the 4100N, 2750N and 2200N Zones at Storm: a large copper-rich core (chalcocite, bornite and covellite) gives way laterally and vertically to thinner peripheral zones of copper-iron (chalcopyrite), iron (pyrite), zinc (sphalerite) and minor lead (galena). ST22-10 intersected the peripheral mineralogical assemblage (chalcopyrite, pyrite, sphalerite and galena) suggesting the potential for a nearby larger, more copper-rich core.

The metal associations and zonation of the mineralisation suggest that drill hole ST22-10 potentially intersected the edge a larger copper system.

Additionally, the geology displays all the elements required in the sediment-hosted ore forming process: permeable carbonate rocks to act as a fluid conduit and host mineralisation, hydrocarbons to reduce metal-bearing fluids and force metal precipitation, sulphur source from bitumen and sour gas, proximity to faults known to be an effective source for plumbing, all within a favourable structural setting.

These key features are similar to many of the world's major sediment-hosted copper systems, including the deposits of the Kalahari Copper Belt (Botswana) and Central African Copper Belt (DRC, Zambia).



The three-dimensional interpretation of the 2023 gravity data suggests that drill hole ST22-10 was drilled just to the south, and may have hit the margin of the large dense body that sits below and to the west of the 4100N Zone (Figures 5 & 6).

With both the metal zonation and geophysical modeling suggesting intersection of the periphery of a potentially larger mineralized zone, the large gravity anomaly below the 4100N Zone and to the northwest of ST22-10 is a key target for the discovery of further copper sulphides.

Diamond drilling will be used to test this and other highly prospective exploration targets that sit at the relatively shallow and highly explorable depths of 200m to 500m below the surface.

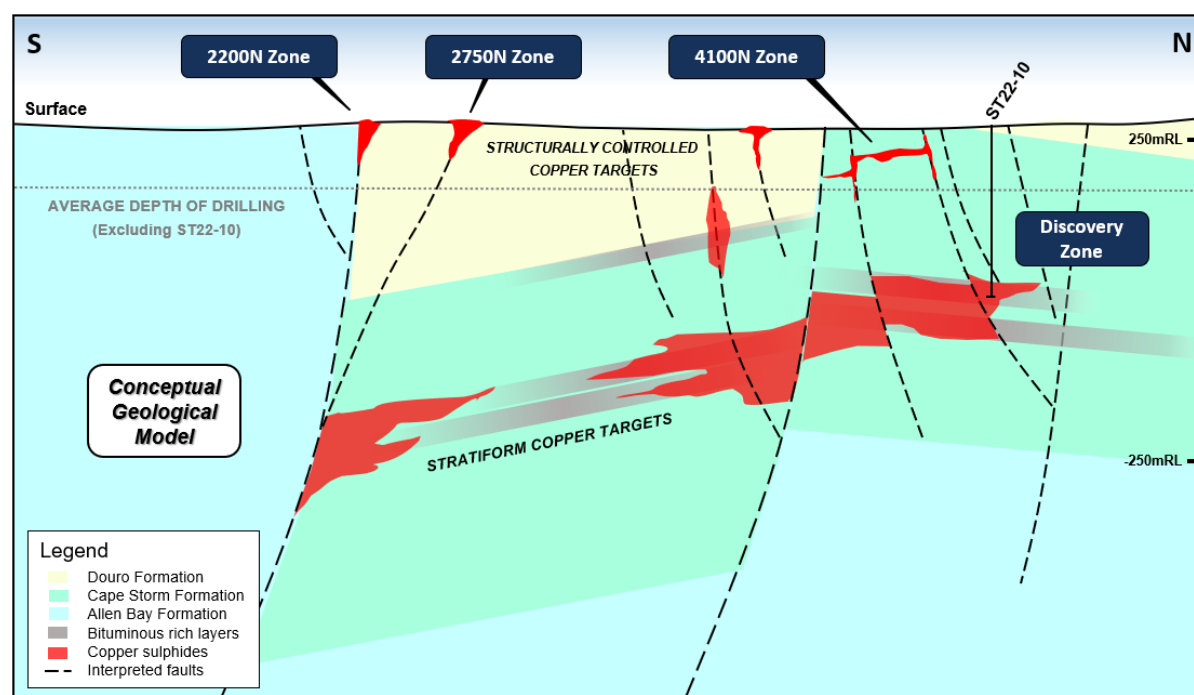


Figure 8: Conceptual geological and exploration targeting model for the Storm Project, showing depth of current drilling and conceptual location of discovery drill hole ST22-10.

GAME CHANGING TARGETING TOOL

The 2023 high-resolution ground gravity survey was designed to follow up historical airborne and limited ground gravity surveys. The prior surveys had identified a series of broad density anomalies that lay adjacent to the large graben faults – interpreted to be conduits for copper forming fluids - and below known near-surface copper sulphide mineralisation.

Given the high contrast in density between copper sulphide mineralisation and the mostly homogenous dolomite host sedimentary rocks at Storm, this geophysical technique was expected to be an effective targeting tool.

The new survey has provided high quality data and a significant increase in the understanding of the Storm graben area. The survey included a total of 2,657 gravity stations (Figure 9), with an approximate station spacing of 150m x 50m (E-W and N-S respectively). Topographic surveying was performed simultaneously with gravity data acquisition, and terrain corrections were applied on the data.



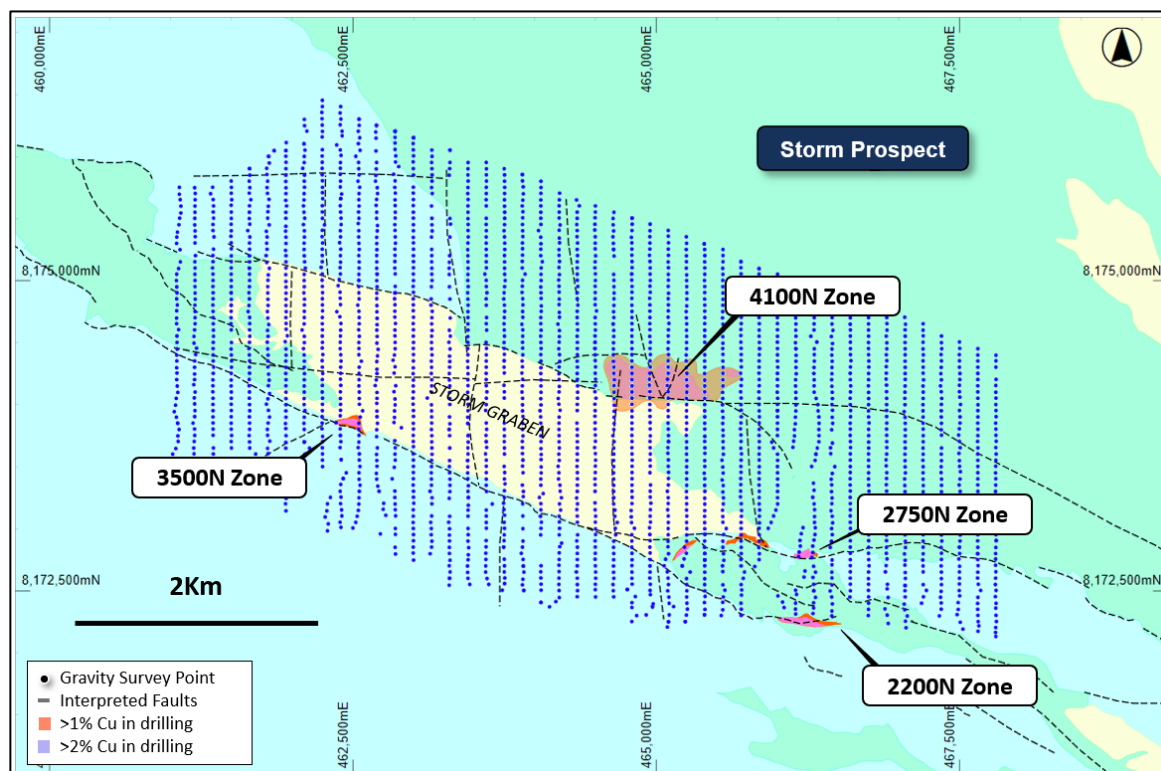


Figure 9: Ground gravity station locations overlaying geology.

FORWARD PROGRAM

- Drilling at the 4100N Zone will continue in the summer field program, with a focus on expansion of the mineralised footprint. This program will be followed by resource definition drilling at the 2200N and 2750N Zone – drilling here intersected high-grade copper sulphides close to surface including 41m @ 4.18% Cu from 38m (ST22-05), 110m @ 2.45% Cu from surface (ST97-08) and 56.3m @ 3.07% Cu from 12.2m (ST99-19).
- Processing and interpretation of the MLEM data is almost complete.
- Diamond drilling will be scheduled to test new high-priority exploration targets identified from the gravity survey.
- Ore sorting and beneficiation test work for a potential direct shipping ore (DSO) operation is continuing with results to follow shortly.
- An environmental baseline survey is scheduled to begin shortly at Storm.

Investors can expect regular updates on the progress of drilling as well as announcements for the assay results when they become available.



This announcement has been approved for release by the Board of American West Metals Limited.

For enquiries:

Dave O'Neill

Managing Director

American West Metals Limited

doneill@aw1group.com

+ 61 457 598 993

Dannika Warburton

Principal

Investability

info@investability.com.au

+61 401 094 261

Competent Person Statement

The information in this report that relates to Exploration Results for the Storm Copper and Seal Zinc-Silver Projects is based on information compiled by Mr Dave O'Neill, a Competent Person who is a Member of The Australasian Institute of Mining and Metallurgy. Mr O'Neill is employed by American West Metals Limited as Managing Director, and is a substantial shareholder in the Company.

Mr O'Neill has sufficient experience that is relevant to the style of mineralisation and type of deposit under consideration and to the activity being undertaken to qualify as a Competent Person as defined in the 2012 Edition of the 'Australasian Code for Reporting of Exploration Results, Mineral Resources and Ore Reserves'. Mr O'Neill consents to the inclusion in the report of the matters based on his information in the form and context in which it appears.

ASX Listing Rule 5.12

The Company has previously addressed the requirements of Listing Rule 5.12 in its Initial Public Offer prospectus dated 29 October 2021 (released to ASX on 9 December 2021) (Prospectus) in relation to the 2014 Foreign West Desert MRE at the West Desert Project. The Company is not in possession of any new information or data relating to the West Desert Project that materially impacts on the reliability of the estimates or the Company's ability to verify the estimates as mineral resources or ore reserves in accordance with the JORC Code. The Company confirms that the supporting information provided in the Prospectus continues to apply and has not materially changed.

This ASX announcement contains information extracted from the following reports which are available on the Company's website at <https://www.americanwestmetals.com/site/content/>:

- 29 October 2021 Prospectus

The Company confirms that it is not aware of any new information or data that materially affects the exploration results included in the Prospectus. The Company confirms that the form and context in which the Competent Person's findings are presented have not been materially modified from the Prospectus.



Forward looking statements

Information included in this release constitutes forward-looking statements. Often, but not always, forward looking statements can generally be identified by the use of forward-looking words such as “may”, “will”, “expect”, “intend”, “plan”, “estimate”, “anticipate”, “continue”, and “guidance”, or other similar words and may include, without limitation, statements regarding plans, strategies and objectives of management.

Forward looking statements inherently involve known and unknown risks, uncertainties and other factors that may cause the Company’s actual results, performance, and achievements to differ materially from any future results, performance, or achievements. Relevant factors may include, but are not limited to, changes in commodity prices, foreign exchange fluctuations and general economic conditions, the speculative nature of exploration and project development, including the risks of obtaining necessary licenses and permits and diminishing quantities or grades of reserves, political and social risks, changes to the regulatory framework within which the Company operates or may in the future operate, environmental conditions including extreme weather conditions, recruitment and retention of personnel, industrial relations issues and litigation.

Forward looking statements are based on the Company and its management’s good faith assumptions relating to the financial, market, regulatory and other relevant environments that will exist and affect the Company’s business and operations in the future. The Company does not give any assurance that the assumptions on which forward looking statements are based will prove to be correct, or that the Company’s business or operations will not be affected in any material manner by these or other factors not foreseen or foreseeable by the Company or management or beyond the Company’s control.

Although the Company attempts and has attempted to identify factors that would cause actual actions, events, or results to differ materially from those disclosed in forward looking statements, there may be other factors that could cause actual results, performance, achievements, or events not to be as anticipated, estimated or intended, and many events are beyond the reasonable control of the Company. Accordingly, readers are cautioned not to place undue reliance on forward looking statements. Forward looking statements in this announcement speak only at the date of issue. Subject to any continuing obligations under applicable law or any relevant stock exchange listing rules, in providing this information the Company does not undertake any obligation to publicly update or revise any of the forward-looking statements or to advise of any change in events, conditions or circumstances on which any such statement is based.



ABOUT AMERICAN WEST METALS

AMERICAN WEST METALS LIMITED (ASX: AW1) is an Australian clean energy mining company focused on growth through the discovery and development of major base metal mineral deposits in Tier 1 jurisdictions of North America. Our strategy is focused on developing mines that have a low-footprint and support the global energy transformation.

Our portfolio of copper and zinc projects in Utah and Canada include significant existing resource inventories and high-grade mineralisation that can generate robust mining proposals. Core to our approach is our commitment to the ethical extraction and processing of minerals and making a meaningful contribution to the communities where our projects are located.

Led by a highly experienced leadership team, our strategic initiatives lay the foundation for a sustainable business which aims to deliver high-multiplier returns on shareholder investment and economic benefits to all stakeholders.



JORC Code, 2012 Edition – Table 1

Section 1 Sampling Techniques and Data

(Criteria in this section apply to all succeeding sections.)

Criteria	JORC Code explanation	Commentary
Sampling techniques	<ul style="list-style-type: none"> <i>Nature and quality of sampling (eg cut channels, random chips, or specific specialised industry standard measurement tools appropriate to the minerals under investigation, such as down hole gamma sondes, or handheld XRF instruments, etc). These examples should not be taken as limiting the broad meaning of sampling.</i> <i>Include reference to measures taken to ensure sample representivity and the appropriate calibration of any measurement tools or systems used.</i> <i>Aspects of the determination of mineralisation that are Material to the Public Report.</i> <i>In cases where ‘industry standard’ work has been done this would be relatively simple (eg ‘reverse circulation drilling was used to obtain 1 m samples from which 3 kg was pulverised to produce a 30 g charge for fire assay’). In other cases, more explanation may be required, such as where there is coarse gold that has inherent sampling problems. Unusual commodities or mineralisation types (eg submarine nodules) may warrant disclosure of detailed information.</i> 	<p>Diamond Drilling</p> <ul style="list-style-type: none"> Sampling and geological intervals are determined visually by geologists with relevant experience The intervals of the core that are selected for assaying are marked up and then recorded for cutting and sampling. The mineralisation at the Storm and Seal display classic features and is distinctive from the host and gangue lithologies All intercepts are reported as downhole widths <p>Reverse Circulation Drilling</p> <ul style="list-style-type: none"> Sampling and geological intervals are determined visually by geologists with relevant experience The sampling interval is 5ft. The mineralisation at the Storm and Seal display classic features and is distinctive from the host and gangue lithologies All intercepts are reported as downhole widths <p>Fixed Loop Electromagnetics (FLEM)</p> <ul style="list-style-type: none"> The Electromagnetic (EM) surveys were completed by Initial Exploration Services, Canada. The surveys were completed using a Geonics TEM57 MK-2 transmitter with TEM67 boosters. An ARMIT Mk2.5 sensor and EMIT SMARTem 24 receiver were used to measure and collect vertical (Z) and horizontal (X and Y) components of the B-Field and its partial derivative dB/dt. The surveys were completed in conventional Fixed Loop (FLEM) configuration, with sensors placed both in and out of the loops.

Criteria	JORC Code explanation	Commentary
		<p>Moving Loop Electromagnetics (MLEM)</p> <ul style="list-style-type: none"> The Electromagnetic (EM) surveys were completed by Geophysique TMC, Canada. The surveys were completed using dual Crone PEM transmitters - 9.6kW. Crone surface coil sensors and CRONE CDR4 24 receivers were used to measure and collect vertical (Z) and horizontal (X and Y) components of the secondary field dB/dt. The surveys were completed using both an inloop and slingram (MLEM) configuration, with sensors placed both in and out of each loop. <p>Ground Gravity Surveys</p> <ul style="list-style-type: none"> The ground gravity surveys were completed by Initial Exploration Services, Canada. The surveys were completed using a Scintrex Autograv CG-6 gravity meter. The surveys were completed along N-S orientated survey lines with a nominal 150m line spacing and 50m station spacing.
Drilling techniques	<ul style="list-style-type: none"> Drill type (eg core, reverse circulation, open-hole hammer, rotary air blast, auger, Bangka, sonic, etc) and details (eg core diameter, triple or standard tube, depth of diamond tails, face-sampling bit or other type, whether core is oriented and if so, by what method, etc). 	<ul style="list-style-type: none"> Diamond drilling is completed by Top Rank Diamond Drilling using a Zinex A5 drilling rig Reverse Circulation drilling is completed by Northspan Explorations Ltd using a Hornet heli portable drilling rig. NQ2 diameter drill core is used in diamond drilling Downhole directional surveys are completed every 30m
Drill sample recovery	<ul style="list-style-type: none"> Method of recording and assessing core and chip sample recoveries and results assessed. Measures taken to maximise sample recovery and ensure representative nature of the samples. Whether a relationship exists between sample recovery and grade and whether sample bias may have occurred due to preferential loss/gain of fine/coarse material. 	<ul style="list-style-type: none"> Drill recoveries are recorded by the driller and verified by the logging geologist To minimise core loss in unconsolidated or weathered ground, split tubes are used until the ground becomes firm and acceptable core runs can be achieved No relationship has been determined between core recovery and grade and no sample bias is believed to exist
Logging	<ul style="list-style-type: none"> Whether core and chip samples have been geologically and geotechnically logged to a level of detail to support appropriate Mineral Resource estimation, mining studies and metallurgical studies. Whether logging is qualitative or quantitative in nature. Core (or costean, channel, etc) photography. The total length and percentage of the relevant intersections logged. 	<ul style="list-style-type: none"> Detailed geological logging is carried out on all drill holes with lithology, alteration, mineralisation, structure and veining recorded The logging is qualitative and quantitative The drill core is marked up and photographed wet and dry Representative RC chips are stored in chip trays 100% of all relevant intersections and lithologies are logged The level of detail is considered sufficient to support future mineral resource estimations, and mining and metallurgical studies

Criteria	JORC Code explanation	Commentary
Sub-sampling techniques and sample preparation	<ul style="list-style-type: none"> • <i>If core, whether cut or sawn and whether quarter, half or all core taken.</i> • <i>If non-core, whether riffled, tube sampled, rotary split, etc and whether sampled wet or dry.</i> • <i>For all sample types, the nature, quality and appropriateness of the sample preparation technique.</i> • <i>Quality control procedures adopted for all sub-sampling stages to maximise representivity of samples.</i> • <i>Measures taken to ensure that the sampling is representative of the in-situ material collected, including for instance results for field duplicate/second-half sampling.</i> • <i>Whether sample sizes are appropriate to the grain size of the material being sampled.</i> 	<ul style="list-style-type: none"> • The core is cut onsite into 1/2 along the length of the core for assay, qualitative analysis and metallurgical sampling • RC samples are captured within a cyclone via a hose from the drill rig and then split through a riffle splitter for sample representivity. • Quality control procedures include submission of Certified Reference Materials (standards), duplicates and blanks with each sample batch. QAQC results are routinely reviewed to identify and resolve any issues • Sample preparation is completed at the laboratory. Samples are weighed, dried, crushed to better than 70% passing 2mm; sample was split with a riffle splitter and a split of up to 300g pulverised to better than 85% passing 75µm • The sample sizes are considered to be appropriate to correctly represent base metal sulphide mineralisation and associated geology based on: the style of mineralisation (massive and disseminated sulphides), the thickness and consistency of the intersections and the sampling methodology
Quality of assay data and laboratory tests	<ul style="list-style-type: none"> • <i>The nature, quality and appropriateness of the assaying and laboratory procedures used and whether the technique is considered partial or total.</i> • <i>For geophysical tools, spectrometers, handheld XRF instruments, etc, the parameters used in determining the analysis including instrument make and model, reading times, calibrations factors applied and their derivation, etc.</i> • <i>Nature of quality control procedures adopted (eg standards, blanks, duplicates, external laboratory checks) and whether acceptable levels of accuracy (ie lack of bias) and precision have been established.</i> 	<ul style="list-style-type: none"> • Samples are assayed for Ag, Al, As, Ba, Be, Bi, Ca, Cd, Co, Cr, Cu, Fe, Ga, K, La, Mg, Mn, Mo, Na, Ni, P, Pb, S, Sb, Sc, Sr, Th, Ti, ,Tl, U, V, W, Zn using the ME-ICP61a method and the ME-OG62 secondary analysis for ore grade samples • Sample are assayed for Au where appropriate using Fire Assay • The assay method and detection limits are appropriate for analysis of the elements require • Laboratory QAQC involves the use of internal lab standards using certified reference material (CRMs), blanks and pulp duplicates as part of in-house procedures. The Company also submits a suite of CRMs, blanks and selects appropriate samples for duplicates
Verification of sampling and assaying	<ul style="list-style-type: none"> • <i>The verification of significant intersections by either independent or alternative company personnel.</i> • <i>The use of twinned holes.</i> • <i>Documentation of primary data, data entry procedures, data verification, data storage (physical and electronic) protocols.</i> • <i>Discuss any adjustment to assay data.</i> 	<ul style="list-style-type: none"> • Significant intersections are verified by the Company's technical staff and a suitably qualified Competent Person • No twinned holes have been drilled or used • Primary data is captured onto a laptop spreadsheet and includes geological logging, sample data and QA/QC information. This data, together with the assay data, is validated and entered into the American West Metals server in Perth, Australia • No assay data is adjusted

Criteria	JORC Code explanation	Commentary
Location of data points	<ul style="list-style-type: none"> • Accuracy and quality of surveys used to locate drill holes (collar and down-hole surveys), trenches, mine workings and other locations used in Mineral Resource estimation. • Specification of the grid system used. • Quality and adequacy of topographic control. 	<ul style="list-style-type: none"> • A handheld global positioning system (GPS) is used to determine positioning for the FLEM, MLEM, Gravity surveys and all drill collar locations (within 5m). • The grid system used is NAD83 / UTM zone 15N • The handheld GPS has an accuracy greater than +/-5m for topographic and spatial control. • Terrain and bouguer corrections were used in the processing of gravity data.
Data spacing and distribution	<ul style="list-style-type: none"> • Data spacing for reporting of Exploration Results. • Whether the data spacing, and distribution is sufficient to establish the degree of geological and grade continuity appropriate for the Mineral Resource and Ore Reserve estimation procedure(s) and classifications applied. • Whether sample compositing has been applied. 	<ul style="list-style-type: none"> • The drilling results in this report are not sufficient to establish the degree of geological and grade continuity to support the definition of Mineral Resource and Reserves and the classifications applied under the 2012 JORC code. • No sample compositing has been applied. Weighted average grade calculations are used for drilling intercepts. • The Storm FLEM loops were 1,000m by 1,000m, orientated to 0 degrees, and used stations spacings of 100m with 50m infills. • The Storm MLEM loops are 100m x 100m, surveying complete with a N-S line direction, with a line spacing of 100m and station spacings of 50m. • The gravity surveys were completed along N-S orientated survey lines with a nominal 150m line spacing and 50m station spacing. • The gravity 3D inversion was completed using a 40 x 40 x 20 mesh in VOXI.
Orientation of data in relation to geological structure	<ul style="list-style-type: none"> • Whether the orientation of sampling achieves unbiased sampling of possible structures and the extent to which this is known, considering the deposit type. • If the relationship between the drilling orientation and the orientation of key mineralised structures is considered to have introduced a sampling bias, this should be assessed and reported if material. 	<ul style="list-style-type: none"> • The drill holes are designed to intersect the mineralised zones at a near perpendicular orientation (unless otherwise stated). However, the orientation of key structures may be locally variable and any relationship to mineralisation has yet to be identified • No orientation-based sampling bias has been identified in the data to date.
Sample security	<ul style="list-style-type: none"> • The measures taken to ensure sample security. 	<ul style="list-style-type: none"> • All drill core is handled by company personnel or suitable contractors • All core cutting and handling follows documented procedures
Audits or reviews	<ul style="list-style-type: none"> • The results of any audits or reviews of sampling techniques and data. 	<ul style="list-style-type: none"> • No audits of the sampling protocol have yet been completed • A review of the FLEM data was completed by Southern Geoscience Consultants (SGC) who considered to surveys to be effective for these styles of mineralisation.

Section 2 Reporting of Exploration Results

(Criteria listed in the preceding section also apply to this section.)

Criteria	JORC Code explanation	Commentary
Mineral tenement and land tenure status	<ul style="list-style-type: none"> Type, reference name/number, location and ownership including agreements or material issues with third parties such as joint ventures, partnerships, overriding royalties, native title interests, historical sites, wilderness or national park and environmental settings. The security of the tenure held at the time of reporting along with any known impediments to obtaining a license to operate in the area. 	<ul style="list-style-type: none"> The Nunavut property contains the Seal zinc-silver deposit and multiple copper showings, collectively known as the Storm copper prospect. The property comprises 134 contiguous mineral claims, 124 of which are named AB 1 to AB 82, AB 84 to AB 125 and 10 of which are named ASTON 1 to ASTON 10, as well as 12 prospecting permits, numbered P-12 to P-17 and P-26 to P-31. The total area covered by the project tenure is 414,537.9 ha. Aston Bay Ltd currently holds 100% interest in all mineral claims and prospecting permits. American West Metals Ltd has entered into an option agreement on the property with the potential to acquire an 80% interest. The Seal zinc-silver deposit lies within claim number AB 1 and the Storm copper prospect showings lie within claims AB 32, AB 33, AB 36 and AB 37. All tenements are in good standing.
Exploration done by other parties	<ul style="list-style-type: none"> Acknowledgment and appraisal of exploration by other parties. 	<ul style="list-style-type: none"> Exploration work in the areas around Aston Bay and the Storm property has been carried out intermittently since the 1960s. Most of the historical work at the Storm property was undertaken by, or on behalf of, Cominco. In 1966, Cominco conducted stream geochemical sampling with a sample density of 1 sample per 6.2 km², with three samples taken from the area around Seal showings. In 1970, J.C. Sproule and Associates Ltd conducted photogeological mapping, limited reconnaissance prospecting and stream sediment geochemical sampling. The geochemical survey included areas of the far eastern side of the current Storm property and returned some anomalous copper assay values. In 1973, Cominco conducted geological mapping, prospecting and soil sampling in the Aston Bay area as a follow-up to 1966 work. Anomalous soil and rock samples were described, with zinc values up to 5% in rubble at the main Seal showings. In 1974, Cominco conducted geological mapping, prospecting and soil sampling on the Aston Bay property (Seal showings) with 15 soil samples collected and analysed for zinc and lead. In 1978, Esso Minerals conducted prospecting, geological mapping, geochemical surveys and an airborne radiometric survey exploring for uranium mineralisation at Aston Bay. In 1993, Cominco conducted stream sediment geochemistry and prospecting in the Aston Bay area.

Criteria	JORC Code explanation	Commentary
		<ul style="list-style-type: none"> • In 1994, Cominco conducted various exploration activities, including detailed geological mapping on Seal Island and the North and South peninsulas of Aston Bay. A total of 168 line-km of induced polarisation (IP) and 62 line-km of gravity geophysical surveys were conducted on Seal Island and the North Peninsula. Soil geochemical sampling was conducted along the Seal Island and North Peninsula geophysical grids. Soil sampling, prospecting and mapping were done on the South Peninsula, with a total of 434 soil samples and 65 rock grab samples analysed, returning anomalous zinc grades >1% for some samples. Helicopter reconnaissance and heavy minerals sampling were conducted south of Aston Bay. • In 1995, Cominco completed 14 DD holes (AB95-1 to AB95-14) on the North Peninsula for a total of 2,465.7 m. Drill intersections of up to 10.5% Zn and 28 g/t Ag over an 18 m core length were obtained for the Seal zinc-silver deposit. • In 1996, Cominco completed 10 DD holes (AB96-15 to AB96-24), totalling 1,733.0 m on the North and South peninsulas. Best results were from the North Peninsula drill holes, including 1.8% Zn with 14 ppm Ag over 0.5 m in hole AB96-17 and 2.8% Zn, with 10 ppm Ag over 1 m and 2.2% Zn over 1 m in hole AB96-17. Cominco geologists discovered large chalcocite boulders in Ivor Creek, about 20 km east of Aston Bay, at the subsequently named 2750 Zone at the Storm copper showings. Copper mineralisation, hosted by Palaeozoic dolostone and limestone, was found over a 7 km structural trend. • In 1997, Sander Geophysics Ltd, on behalf of Cominco, conducted a high-resolution aeromagnetic survey over a 5,000 km² area of northern Somerset Island. A total of 89 line-km of IP and 71.75 line-km of HLEM surveys were completed, and 536 soil samples were collected at the Storm copper showings. In addition, 17 DD holes, for a total of 2,784 m, were completed in the central graben area of the Storm zone. Assay highlights included 49.71% Cu with 17.1 ppm Ag over 0.6 m and 19.87% Cu over 1.1 m in hole ST97-02; 4.67% Cu over 4.8 m and 4.13% Cu over 1.4 m in hole ST97-03; and 14.62% Cu with 23.5 g/t Ag over 1.3 m and 4.41% Cu with 12.4 g/t Ag over 1.4 m in hole ST97-13. • In 1998, Cominco completed a total of 44.5 line-km of IP survey and 2,090 soil samples were collected at the Storm zone. In total, 851 soil samples were collected along the IP grid and 1,239 base-of-slope samples were collected during regional drainage prospecting traverses. An area 700 m by 100 m on the soil grid was found to contain >500 ppm Cu, trending parallel to the graben structure. • In 1999, Cominco completed a total of 57.7 line-km of IP survey in the Storm copper zone. A total of 750 soil samples were collected at the main Storm grid. The maximum copper and zinc values achieved in the main grid were 592 ppm and 418 ppm, respectively. To test IP resistivity anomalies, 41 DD holes, for a total of 4,560.8 m, were

Criteria	JORC Code explanation	Commentary
		<p>completed at the Storm copper showings.</p> <ul style="list-style-type: none"> • In 1999, Noranda Inc. (Noranda) entered into an option agreement with Cominco whereby Noranda could earn a 50% interest in the Storm property package (48 claims) by incurring exploration expenditures of \$7 million over a four-year period, commencing in 1999. An airborne hyperspectral survey completed by Noranda identified 26 airborne electromagnetic and magnetic (AEM/MAG) and 266 colour anomalies. • In 2000, Noranda flew a 3,260 line-km GEOTEM electromagnetic and magnetic airborne geophysical survey over the property at 250–300 m line spacings. Ground geophysical surveys were carried out as a follow-up to the airborne surveys, including 100.5 line-km of UTEM, 69.2 line-km of gravity, 11 line-km of magnetics, and 6.5 line-km of HLEM surveys. Eleven DD holes, for a total of 1,885.5 m, were completed; eight of the holes, for a total of 1,348.5 m, were completed within the current Storm property, at the 4100N zone showing. • In 2001, Noranda added the Aston Bay claims (7 claims) to the original option agreement with Cominco. Reconnaissance follow-up work on selected airborne targets from the 1999 and 2000 airborne surveys was completed. Six DD holes, for a total of 822 m, were completed on the Seal zinc showings. Assay highlights for 2001 drilling include 7.65% Zn with 26.5 g/t Ag over 1.1 m in hole AB01-29. • In 2008, Commander was issued prospecting permits 7547, 7548 and 7549, comprising the Storm property. Fieldwork included traversing geological contacts at the Seal 2200N, 2750N, and 4100N showings to evaluate the accuracy of previous mapping. Verification of historical drilling results was undertaken with core stored at the former Aston Bay camp site selectively sampled. Seven holes were sampled, including two from the Seal occurrence and five from the Storm copper showings. Duplicate analyses for the Storm holes corresponded well with original results. • In 2011, Geotech Ltd, on behalf of Commander, conducted a helicopter-borne versatile time domain electromagnetic (VTEM plus) and aeromagnetic survey over the Storm property: a total of 3,969.7 line-km. The primary VTEM survey flight lines were oriented 030/210 at a 150 m spacing, with parallel infill lines at 75 m spacing and orthogonal tie lines at 1,500 m spacing. • In 2012, APEX completed an interpretation of the 2011 VTEM and aeromagnetic survey by Intrepid Geophysics. Modelling of the historical drill hole data in 3D was undertaken to identify trends within the mineralised envelopes of the known showings. This was followed by a site visit, prospecting, surface sampling, sampling intervals of historical DD core that had not been previously sampled or had been sampled but the assays were not made available to Aston Bay, and ground-truthing of the VTEM anomalies by

Criteria	JORC Code explanation	Commentary
		<p>APEX and Aurora personnel. Remnant half-core was quarter cored for resampling purposes. Prospecting confirmed the presence, location and extent of known historical zinc and copper mineralisation at the Seal zinc and Storm copper showings, respectively, and their correlation with geophysical anomalies.</p> <ul style="list-style-type: none"> • In 2016, Aston Bay's exploration program comprised diamond drilling, borehole electromagnetic geophysical surveys, logging of historical drill core, prospecting and soil sampling to provide broad, systematic coverage of the prospective geological units within the Aston Bay property. A total of 2,005 soil samples and 21 rock samples were collected. Twelve exploration diamond drill holes, totalling 1,951 m, were completed at the 2750N, 3600N and 4100N zones at the Storm prospect, and associated Tornado and Hurricane target areas. Downhole time-domain electromagnetic surveys were completed on 5 of the 12 drill holes, and 119 core samples were sent to Zonge International Inc. for petrophysical measurements. No drilling was conducted at the Seal zinc-silver deposit. • In 2017, Aston Bay completed a surface geological reconnaissance program and undertook core review. A property-wide Falcon Plus airborne gravity gradiometry survey was also completed by CGG Multi-Physics, with over 14,672 line-km flown at a 200 m line spacing. A historical/foreign Mineral Resource Estimation by P&E Mining Consultants Inc. was initiated. • In 2018, P&E Mining Consultants Inc., on behalf of Aston Bay, completed a historical/foreign Mineral Resource Estimate on the Seal zinc-silver deposit. The Seal zinc-silver deposit was estimated to contain 1.006 Mt at a grade of 10.24% Zn and 46.5 g/t Ag, using a 4.0% ZnEq cut-off. The estimate is based on diamond drilling conducted by Teck (previously Teck-Cominco) in 1995–96.
Geology	<ul style="list-style-type: none"> • <i>Deposit type, geological setting and style of mineralisation.</i> 	<ul style="list-style-type: none"> • The property contains two significant mineral showings: the Seal zinc-silver prospect in Ordovician mixed carbonate-siliciclastic rocks and the Storm copper prospect in Silurian shelf carbonate rocks. • The Seal zinc-silver mineralised zone determined from outcrop and drill core observations is centred on a sandstone bed near the base of the Ship Point Formation. Dominant sulphides in the drill core and in surface expression are marcasite and pyrite. Iron sulphides appear to be replaced or intergrown with minor dark ('blackjack') sphalerite. • The known mineralized zone at the Seal zinc-silver deposit extends for approximately 400 m along strike and is 50–100 m wide (Cook and Moreton, 2009); the true thickness of the mineralised zone appears to be approximately 20 m. • The Storm copper mineralised zones all occur within the upper 80 m of the Allen Bay

Criteria	JORC Code explanation	Commentary
		<p>Formation and to a lesser extent in the basal Cape Storm Formation, and are referenced by their UTM (Universal Transverse Mercator) northings: 2200N, 2750N, 3500N and 4100N. The first three zones outcrop at surface whereas zone 4100N is blind, covered by a veneer of the Cape Storm Formation.</p> <ul style="list-style-type: none"> The Storm copper sulphide mineralised zones examined in drill core occur within the zones of ferroan carbonate alteration and extend beyond them for at least a few metres. Copper sulphides and later copper carbonates occur within fractures and a variety of breccias, including most commonly crackle breccias as well as lesser in-situ replacive and apparent solution breccias, are present. Sulphides and copper oxides infill the fractures and form the matrix of breccias. Sulphides have sharp contacts with wall rock, both ferroan carbonates and unaltered dolostone. At the Storm copper prospect, chalcocite is the most common copper sulphide observed at surface and in drill core.
Drill hole Information	<ul style="list-style-type: none"> A summary of all information material to the understanding of the exploration results including a tabulation of the following information for all Material drill holes: <ul style="list-style-type: none"> easting and northing of the drill hole collar elevation or RL (Reduced Level – elevation above sea level in metres) of the drill hole collar dip and azimuth of the hole down hole length and interception depth hole length. If the exclusion of this information is justified on the basis that the information is not Material and this exclusion does not detract from the understanding of the report, the Competent Person should clearly explain why this is the case. 	<ul style="list-style-type: none"> Historically drilling and significant intercepts have been independently compiled by Entech and can be found in the Independent Geologist's Report. Supporting drillhole information (easting, northing, elevation, dip, azimuth, down hole length) is supplied within Appendix E of the Independent Geologist's Report. All new drill hole data is tabulated as part of this announcement.
Data aggregation methods	<ul style="list-style-type: none"> In reporting Exploration Results, weighting averaging techniques, maximum and/or minimum grade truncations (eg cutting of high grades) and cut-off grades are usually Material and should be stated. Where aggregate intercepts incorporate short lengths of high grade results and longer lengths of low grade results, the procedure used for such aggregation should be stated and some typical examples of such aggregations should be shown in detail. The assumptions used for any reporting of metal equivalent 	<ul style="list-style-type: none"> Historically significant intercepts have been independently compiled by Entech for the Independent Geologist's Report. Downhole weighted averaged were calculated using a minimum of 1% Copper over a 1 metre interval with exclusion of internal waste greater than 10 metres. True width was not calculated as the mineral asset is currently an exploration prospect without certainty on mineralisation orientation or geometry. No metal equivalents were utilised.

Criteria	JORC Code explanation	Commentary
	<i>values should be clearly stated.</i>	
Relationship between mineralisation widths and intercept lengths	<ul style="list-style-type: none"> • <i>These relationships are particularly important in the reporting of Exploration Results.</i> • <i>If the geometry of the mineralisation with respect to the drill hole angle is known, its nature should be reported.</i> • <i>If it is not known and only the down hole lengths are reported, there should be a clear statement to this effect (eg 'down hole length, true width not known').</i> 	<ul style="list-style-type: none"> • All intervals are reported as down hole lengths. • The geometry of the mineralisation with respect to the drill hole angle is not known and therefore downhole lengths were reported only. True widths are not known.
Diagrams	<ul style="list-style-type: none"> • <i>Appropriate maps and sections (with scales) and tabulations of intercepts should be included for any significant discovery being reported These should include, but not be limited to a plan view of drill hole collar locations and appropriate sectional views.</i> 	<ul style="list-style-type: none"> • Relevant maps and sections are included as part of this release
Balanced reporting	<ul style="list-style-type: none"> • <i>Where comprehensive reporting of all Exploration Results is not practicable, representative reporting of both low and high grades and/or widths should be practiced to avoid misleading reporting of Exploration Results.</i> 	<ul style="list-style-type: none"> • All known explorations results have been reported • Reports on other exploration activities at the project can be found in ASX Releases that are available on our website www.americanwestmetals.com
Other substantive exploration data	<ul style="list-style-type: none"> • <i>Other exploration data, if meaningful and material, should be reported including (but not limited to): geological observations; geophysical survey results; geochemical survey results; bulk samples – size and method of treatment; metallurgical test results; bulk density, groundwater, geotechnical and rock characteristics; potential deleterious or contaminating substances.</i> 	<ul style="list-style-type: none"> • All material or meaningful data collected has been reported.
Further work	<ul style="list-style-type: none"> • <i>The nature and scale of planned further work (eg tests for lateral extensions or depth extensions or large-scale step-out drilling).</i> • <i>Diagrams clearly highlighting the areas of possible extensions, including the main geological interpretations and future drilling areas, provided this information is not commercially sensitive.</i> 	<ul style="list-style-type: none"> • RC drilling at the Storm Copper Prospects is ongoing with a focus on resource definition and exploration work. Diamond drilling will commence in Q2 2023. • Exploration will be rolled out into untested areas at the Tornado, Blizzard and Tempest Prospects. • An airborne magnetic survey has been planned but is yet to be executed. • A baseline environmental survey is planned during summer. • Beneficiation test work on Storm copper ores is ongoing.